

partnerships, residencies and collaborations

Hidden

This touring show asks questions that your community can use as springboards for meaningful dialogue. It is designed to play for adults and youth in educational, conference and corporate settings. This production offers your community members an opportunity to see live theatre that relates to issues in their own lives.

Passing Glances: The Ohio Project

Developed with the aid of an *Animating Democracy* grant supported by the Americans for the Arts and Ford Foundation, the final production was the most publicized culture event in the history of Allen County, Ohio. Bring the production to your community, and use it to catalyze dialogue and potential action plans.

Partnerships and residencies

Like the Lima Arts Council, engage Sojourn in a process of creating an original theatre work exploring your community and the stories, and questions, it holds.

artistic director Michael Rohd
production manager Dawn Young
administrative director Hannah Treuhaft
company Jono Eiland
Daniel R. James
Ryan Keilty
Jenn Van Nice
associate artists Laura Eason
Bobby Bermea
Lisa Currier
Jamie Rea
Kathryn Henderson
board of directors Charles Lattimer
Tristan Lemons
John Lenssen
Michael Rohd
Dawn Young
Hannah Treuhaft
resource council Bruce Allardice
Ping Chong
Pamela Clark
Mike Fisher
Robert Leonard
Rev. Chris Von Lobedan
Doug Paterson
Bill Rauch
George Thorn
Cherie Ulmer

The company of artists and organizers develops original work and bold adaptations of classic scripts and stories with an aesthetic that is history conscious, politically inquisitive and strikingly physical. Sojourn is committed to collaboration. This is reflected in the process by which Sojourn makes theatre, and in the practices of partnership and community programming which Sojourn makes a priority.

sojourn
THEATRE

2534 SE 30th Ave
Portland, OR 97239
971.544.0464

www.sojourntheatre.org

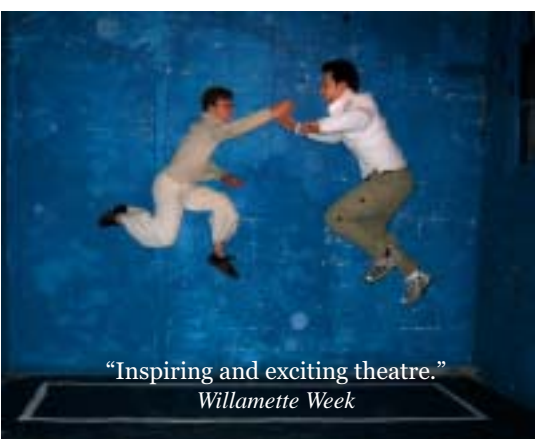


innovative theatre

An ensemble of skilled creators/performers/organizers. Physically dynamic and emotionally charged work. Non-traditional venues and sites. A surprising blend of narrative, metaphor and community voices.



above - **Tartuffe: The Visitor** (2002)
Sojourn's community-engaged response to the country's cultural and political post-9/11 climate.



"Inspiring and exciting theatre."
Willamette Week

above, right - **7 Great Loves** (2003) The top floors of a riverside warehouse. interviews and workshops. This highly physical show collapses multiple narratives into one performance journey.

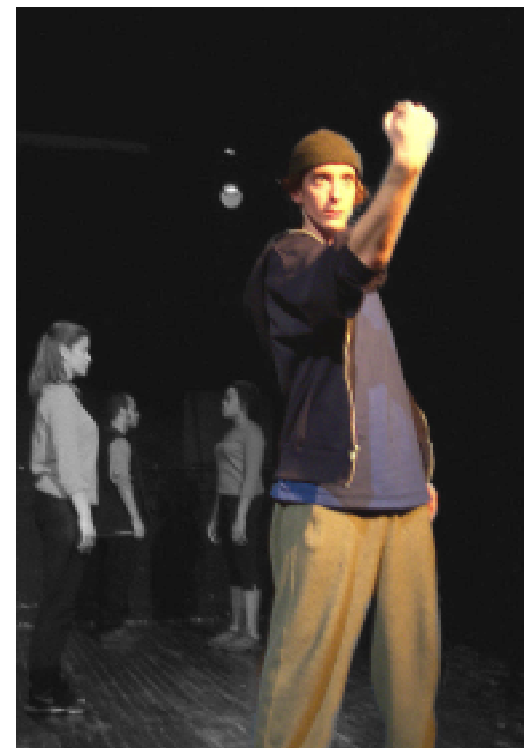


above - **The Justice Project** (2001)
Performed in the Gus Solomon Courthouse Partners throughout the city and state. Capacity crowds.

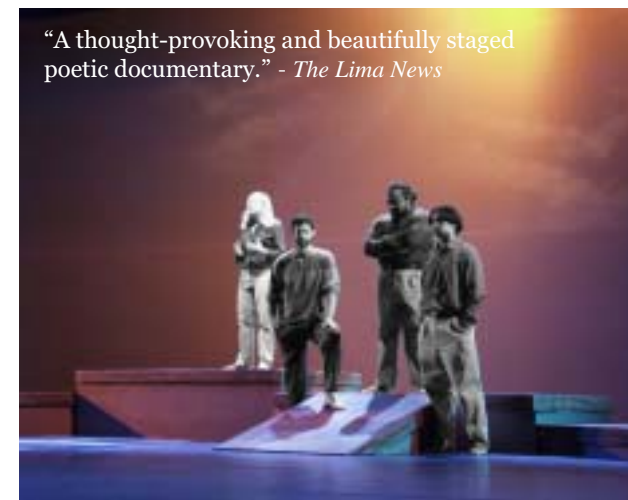
right - **Look Away** (2000-02) Movement theatre. Youth violence and intolerance. Seen by 40,000 young people.

community engagement

A rigorous process of dialogue and development that resources the expertise of citizen partners to explore art and civic discourse on the path to production.



"A thought-provoking and beautifully staged poetic documentary." - *The Lima News*



left - **Passing Glances*** (2002),
A nationally recognized *Animating Democracy* lab project. Lima, Ohio. Two years. Race, class and arts-based dialogue.

below - **Hidden*** (2002) The national Anne Frank touring exhibit. Human right and civil rights in contemporary America. A new theatre in an old mall.

* Both available for touring.

collaboration

In the rehearsal room and in community with individuals and organizations we prioritize building relationships as we build a body of work.



"A powerful theatre event." - *The Oregonian*